



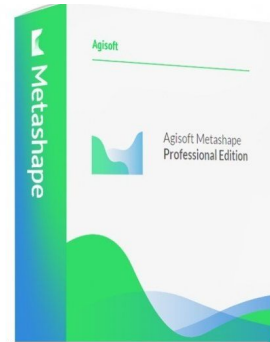
UNIVERSITY OF
BAGHDAD



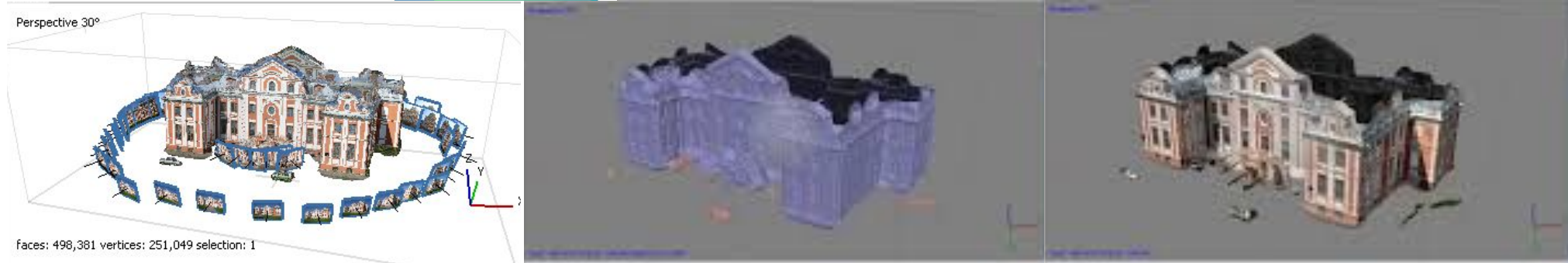
COLLEGE OF
ENGINEERING



DEPARTMENT OF
SURVEYING ENG.



Agisoft Metashape Professional



Close-Range Photogrammetry- Agisoft Metashape Tutorial

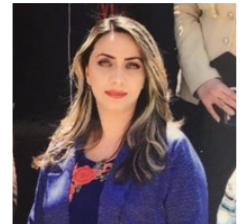
BSc - 4th Stage

2020-2021

Lecture 7

Dr. Fanar Mansour Abed

fanar.mansour@coeng.uobaghdad.edu.iq



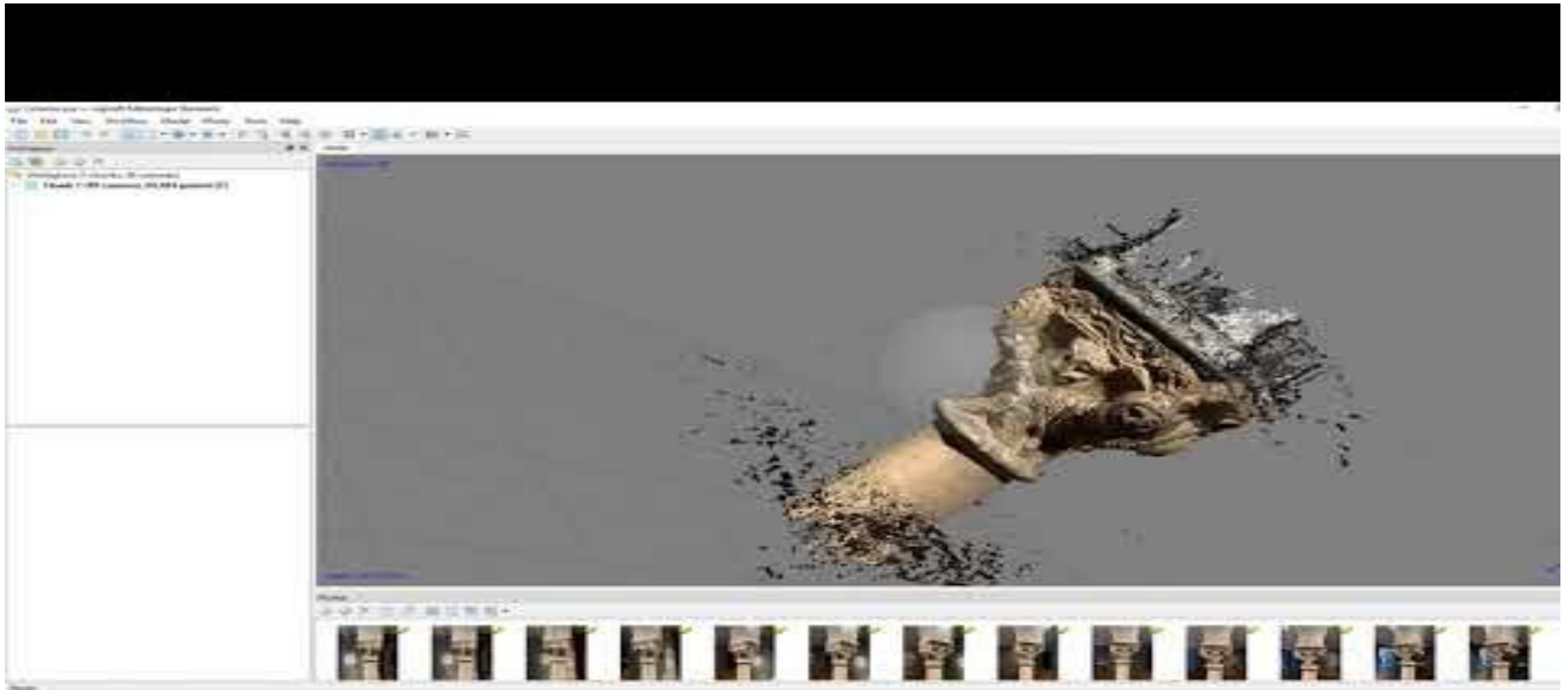
Declaration!

- Video tutorial are listed below using **Agisoft Metashape** software for your **practical understanding**:
 1. CRP application in cultural heritage.
 2. Supplemented video to illustrate coordinate conversion from geographic to projected coordinate systems.
 3. Complete workflow for topographic mapping applications using drone images.

Hint: You will need **internet access** to watch and follow these video!

Note: Download The trial version of Agisoft Metashape from here:
<https://www.agisoft.com/downloads/installer/>

Cultural Heritage- CRP Application Tutorial



Topographic Mapping- UAV Application Tutorial



Acknowledgments

- https://www.agisoft.com/pdf/metashape-pro_1_5_en.pdf
- <https://www.youtube.com/watch?v=WGHWXtf4es8&t=1346s>
- <https://www.youtube.com/watch?v=-7TwilAfTVc>
- <https://www.youtube.com/watch?v=EZfahR49lxA&t=266s>